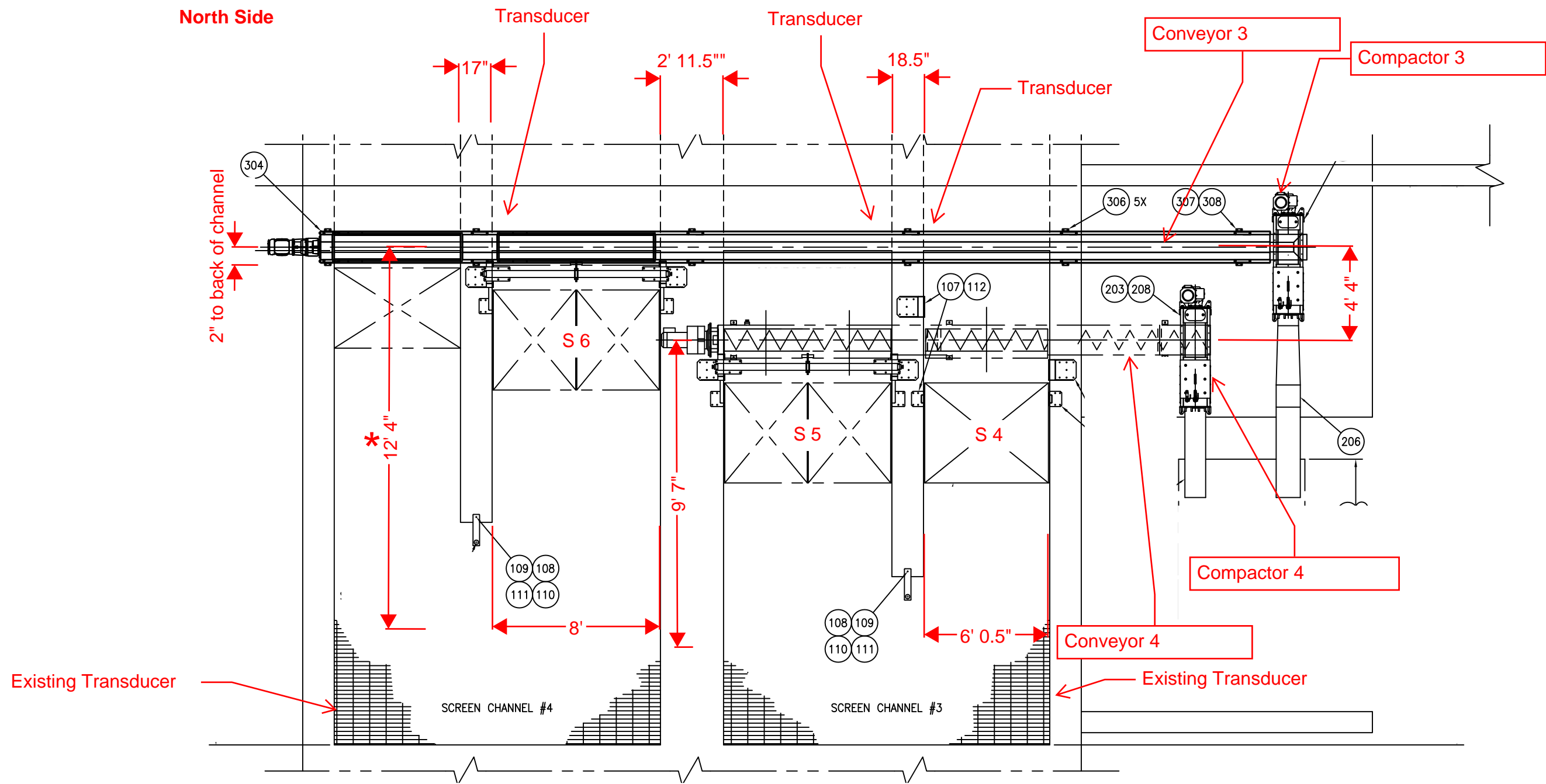


Attachment D

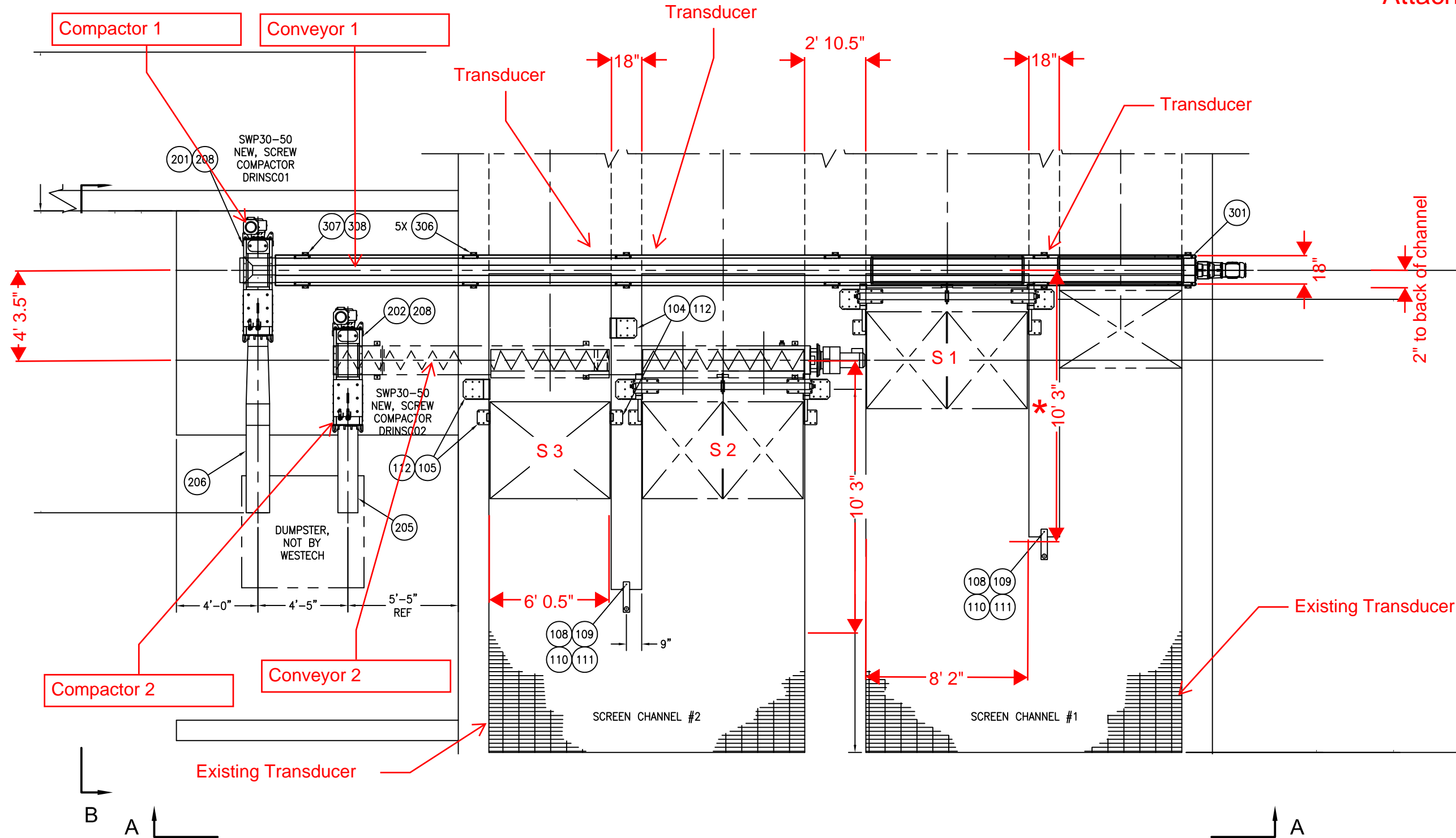
North Side



Motors must be on the right side of screen (when viewed from influent side) of new screen 4.

South Side

Attachment D

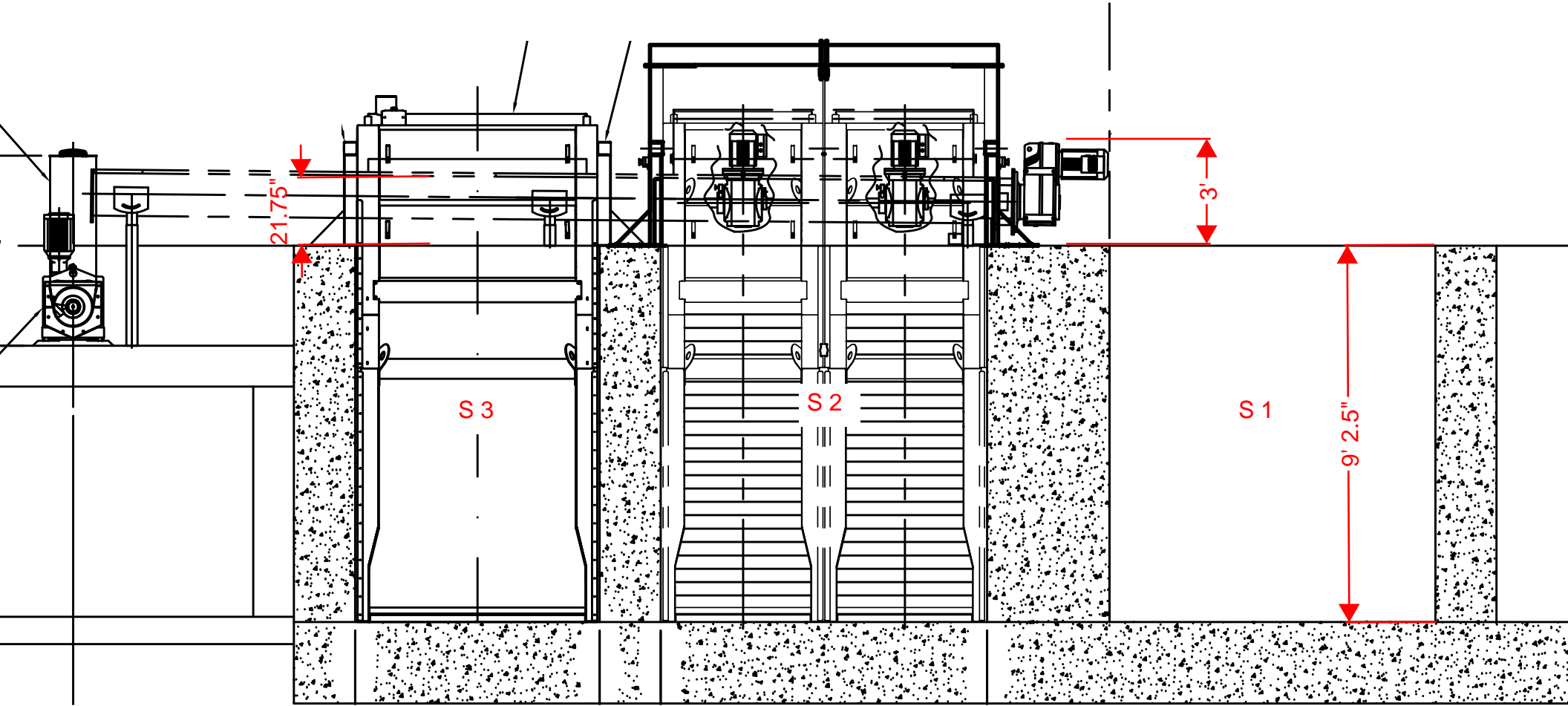


PLAN - EQUIPMENT LAYOUT
 SHOWN AS CHANNELS 1 & 2:
 MIRROR IMAGE FOR CHANNELS 3 & 4

Motors must be on the left side of screen (when viewed from influent side) of new screen 3.

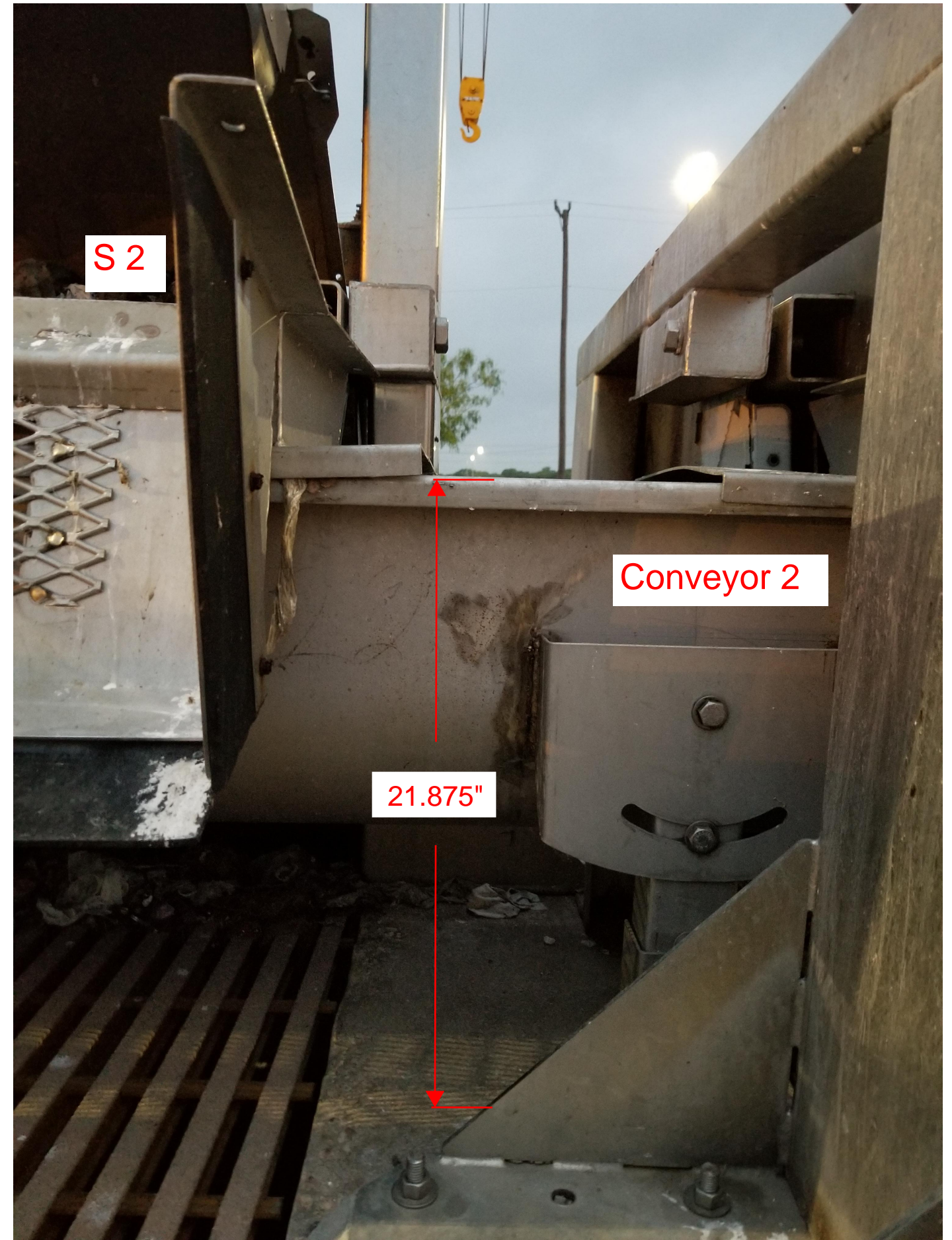
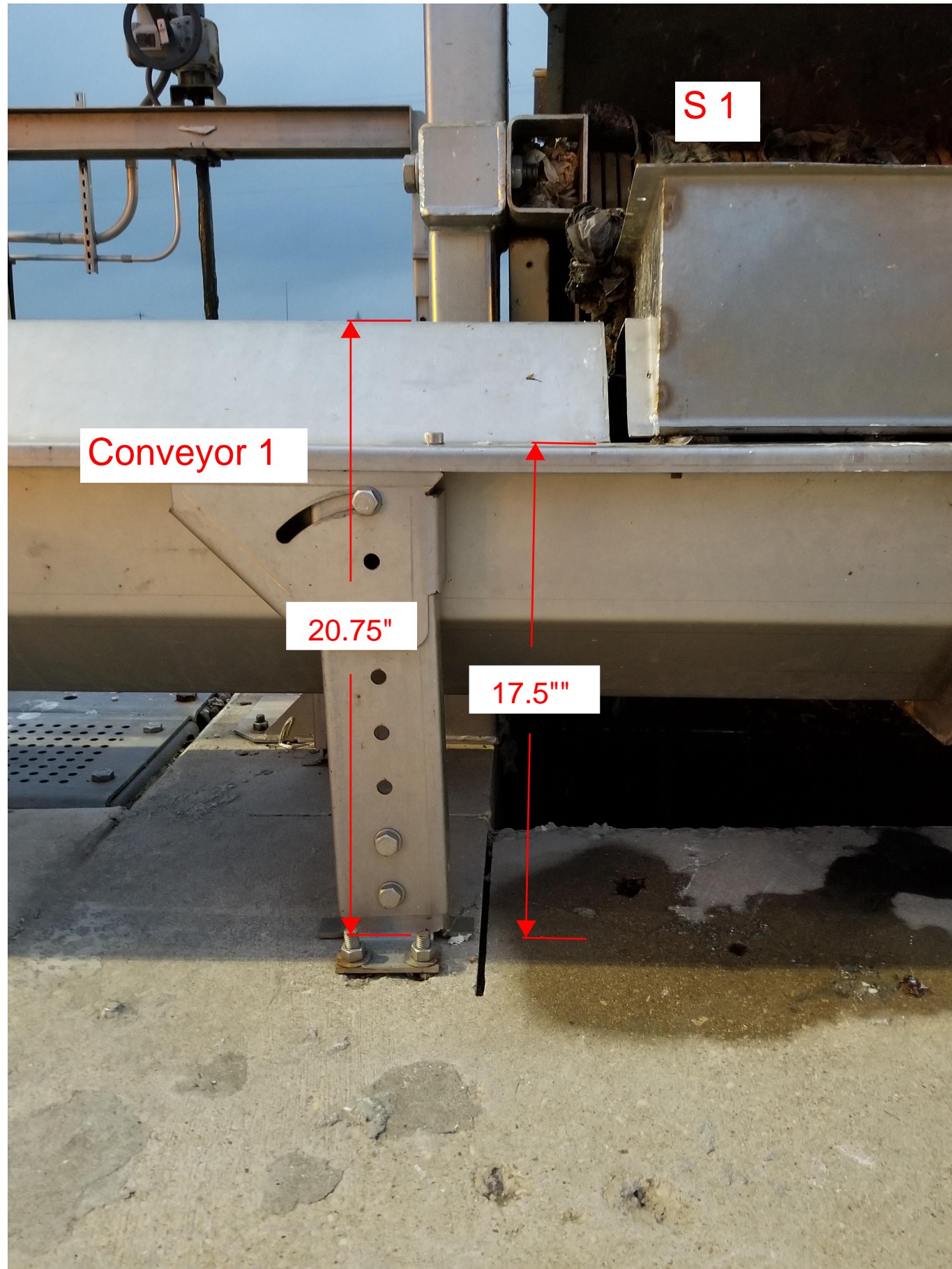
Attachment D

South Side
(Mirror for North Side)



Channel depth may vary
by (but not limited to) half
an inch.

Attachment D



Attachment D

